



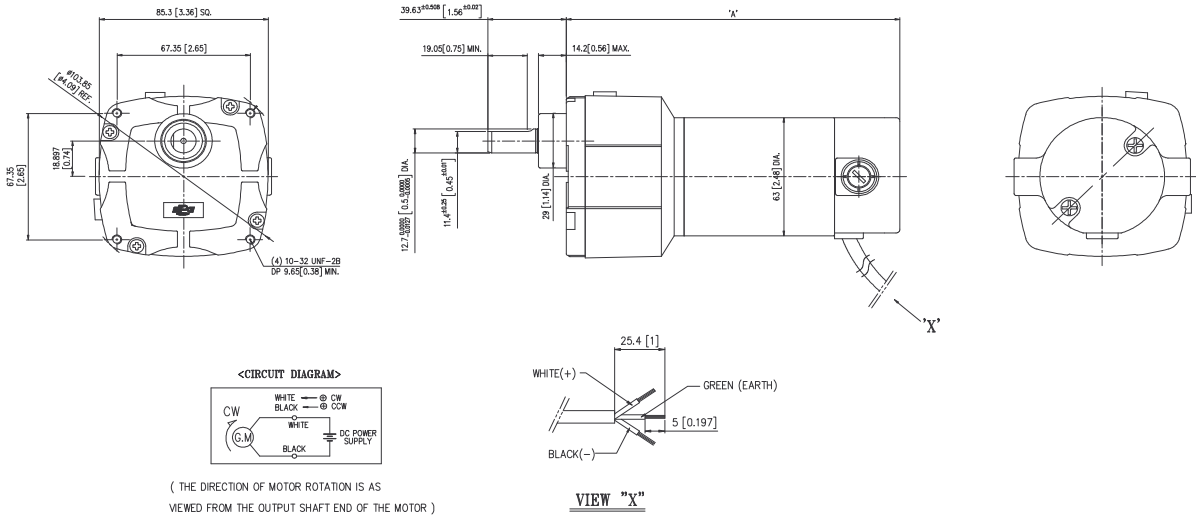
BS2□ SERIES DC GEARED MOTOR

STANDARD FEATURES

- Vented gearhousing for extended seal life.
- Industrial lip type seals on motors and output shaft.
- Needle bearing on output shaft for increased radial load capacity and long life.
- Permanently lubricated gearing utilizing oil for long life.
- Helical pinion accurately cut on motor shaft for maximum strength and minimum noise.

DIMENSION

UNIT:mm(inch)



SPECIFICATION

1. Motor specification

TYPE	Voltage (V)	Output (W)	No load		Rated load			Dimension A (mm/inch)	Run duty (hr)	Weight kg (lb)
			Speed (RPM)	Current (A)	Speed (RPM)	Torque kg-cm (lb-in)	Current (A)			
BS23□A□	24	26	2800	0.3 max	2450	1.03 (0.89)	1.8	152.5/6.00	2000	1.9 (4.19)
BS23□B□	130	26	2800	0.3 max	2500	1.01 (0.88)	0.4	152.5/6.00	2000	1.9 (4.19)
BS24□A□	24	44	2800	0.3 max	2400	1.80 (1.56)	2.6	168.5/6.63	2000	2.1 (4.63)
BS24□B□	130	44	2800	0.3 max	2450	1.75 (1.52)	0.5	168.5/6.63	2000	2.1 (4.63)

2. Geared motor rated torque

TYPE	ratio	6	12	18	30	60	90	180	300	450
BS23□A□	rpm	408.3	204.2	136.1	81.7	40.8	27.2	13.6	8.2	5.4
	kg-cm	5.30	10.60	15.90	26.49	52.99	65.00	65.00	65.00	65.00
	N-m (lb-in)	0.52 (4.60)	1.04 (9.20)	1.56 (13.80)	2.60 (23.00)	5.19 (45.99)	6.37 (56.42)	6.37 (56.42)	6.37 (56.42)	6.37 (56.42)
BS23□B□	rpm	416.7	208.3	138.9	83.3	41.7	27.8	13.9	8.3	5.6
	kg-cm	5.20	10.39	15.59	25.98	51.96	65.00	65.00	65.00	65.00
	N-m (lb-in)	0.51 (4.51)	1.02 (9.02)	1.53 (13.53)	2.55 (22.55)	5.09 (45.10)	6.37 (56.42)	6.37 (56.42)	6.37 (56.42)	6.37 (56.42)
BS24□A□	rpm	400.0	200.0	133.3	80.0	40.0	26.7	13.3	8.0	5.3
	kg-cm	9.26	18.52	27.78	46.30	65.00	65.00	65.00	65.00	65.00
	N-m (lb-in)	0.91 (8.04)	1.81 (16.08)	2.72 (24.11)	4.54 (40.19)	6.37 (56.42)	6.37 (56.42)	6.37 (56.42)	6.37 (56.42)	6.37 (56.42)
BS24□B□	rpm	408.3	204.2	136.1	81.7	40.8	27.2	13.6	8.2	5.4
	kg-cm	9.00	18.00	27.01	45.01	65.00	65.00	65.00	65.00	65.00
	N-m (lb-in)	0.88 (7.81)	1.76 (15.63)	2.65 (23.44)	4.41 (39.07)	6.37 (56.42)	6.37 (56.42)	6.37 (56.42)	6.37 (56.42)	6.37 (56.42)

- The permissible torque of the gear head is 65 kg-cm (56.42 lb-in)
- The first □ indicates the shape of the output shaft and The second □ indicates the ratio.
- The gray color indicates that the output shaft of the geared motor rotates in the opposite direction as the output shaft of the motor. Others indicates the rotation in the same direction.